

## WA Monthly Swing Service Market Outcomes

October-2017



The following table provides the information on the operation of the Swing Service market on the North Metro and South Metro sub-networks over a 13 month rolling window.

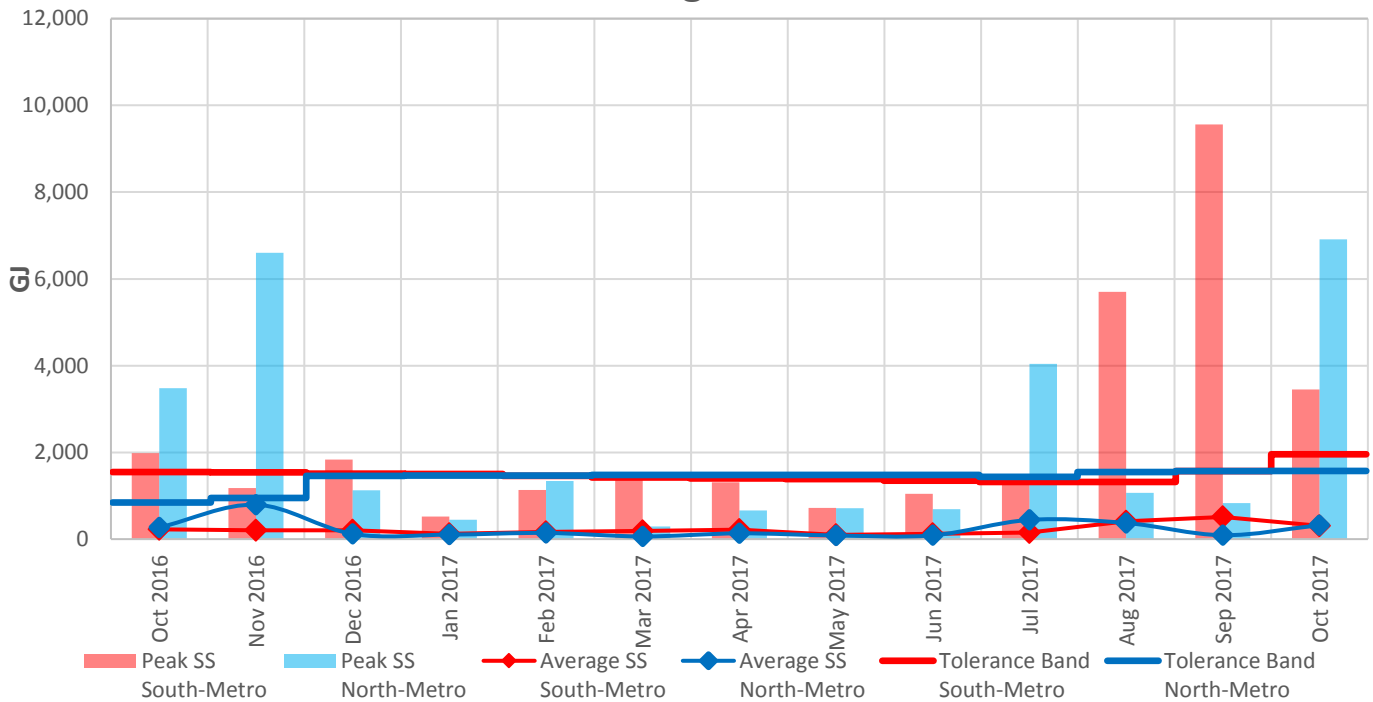
Month	Metro-South Sub-Network		Metro-North Sub-Network	
	Peak SS South-Metro	Average SS South-Metro	Peak SS North-Metro	Average SS North-Metro
October 2016	1,983	225	3,481	268
November 2016	1,175	205	6,598	793
December 2016	1,837	204	1,129	119
January 2017	519	124	451	104
February 2017	1,135	167	1,340	143
March 2017	1,468	192	290	62
April 2017	1,313	216	663	133
May 2017	721	98	711	84
June 2017	1,042	124	694	87
July 2017	1,453	151	4,038	444
August 2017	5,704	411	1,069	372
September 2017	9,563	511	828	90
October 2017	3,449	305	6,913	321
<b>Average</b>	<b>Since March 2016</b>	<b>196</b>	<b>2-year</b>	<b>194</b>

**North Metro** Average and peak Swing Service volumes in the North Metro sub-network were at normal levels for the majority of October 2017. A spike was observed on the 2<sup>nd</sup> October due to lower Pipeline Injection (PI) value than the total User Pipeline Nomination (UPNA) Amount.

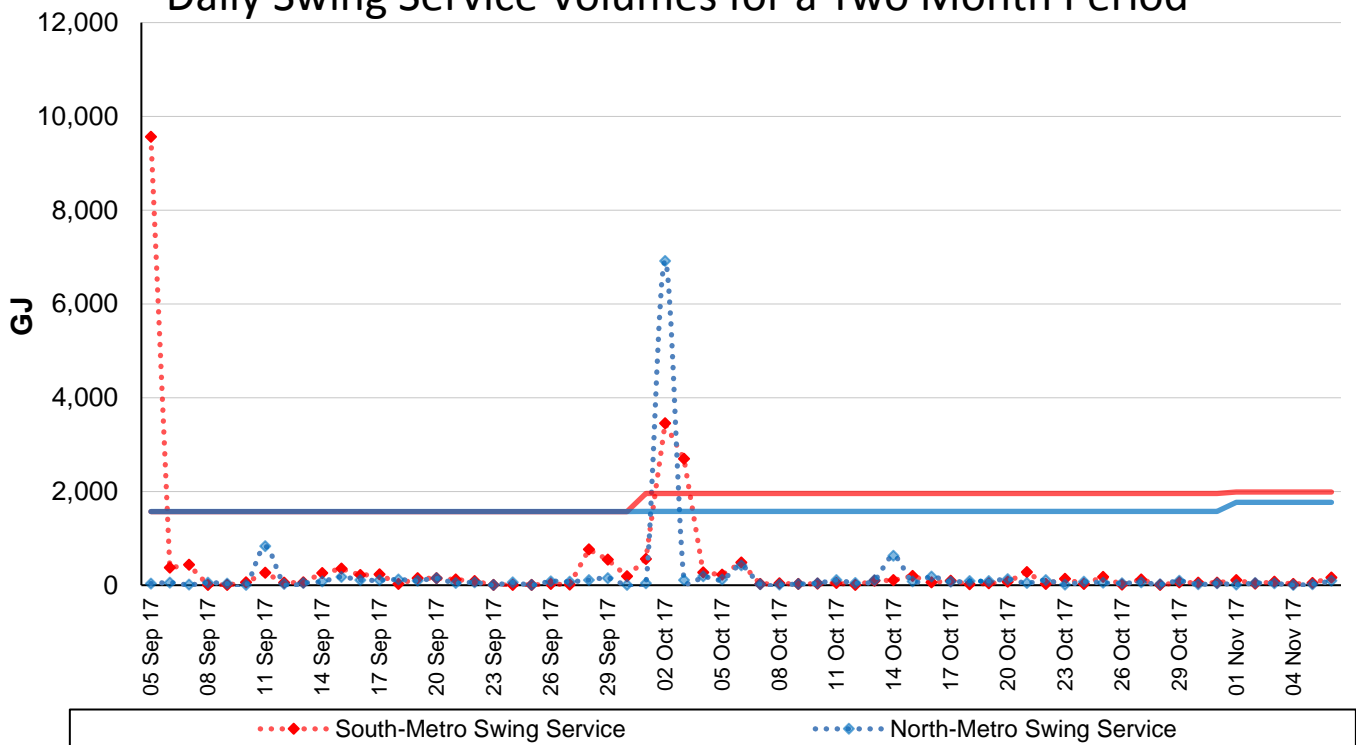
**South Metro** Average and peak Swing Service volumes in the North Metro sub-network were near normal levels for the month of October 2017, with the exception of Swing Service spike for gas days 2<sup>nd</sup> and 3<sup>rd</sup> October.

- For gas days 02~03/10/2017, AEMO has investigated the cause of the Swing Service spike and will commence the compliance process if necessary.

### 13 Month Swing Service Results



### Daily Swing Service Volumes for a Two Month Period



#### Terms:

- Peak SS means the maximum amount of Swing Service recorded on a day during that month.
- Average SS means the average amount of Swing Service for any day in that month.
- Peak Trend is the linear trend of the Peak SS data, using the least squares method.
- Average Trend is the linear trend of the Average SS data, using the least squares method.
- Tolerance Band is a marker – AEMO will investigate and report on any Swing Service spikes that are larger than the Tolerance Band. The Tolerance Band is defined as a volume equal to the mean amount of Swing Service over the last 2 years plus 3 standard deviations.